

Weare Heritage Commission

Welcome to Old Home Day!

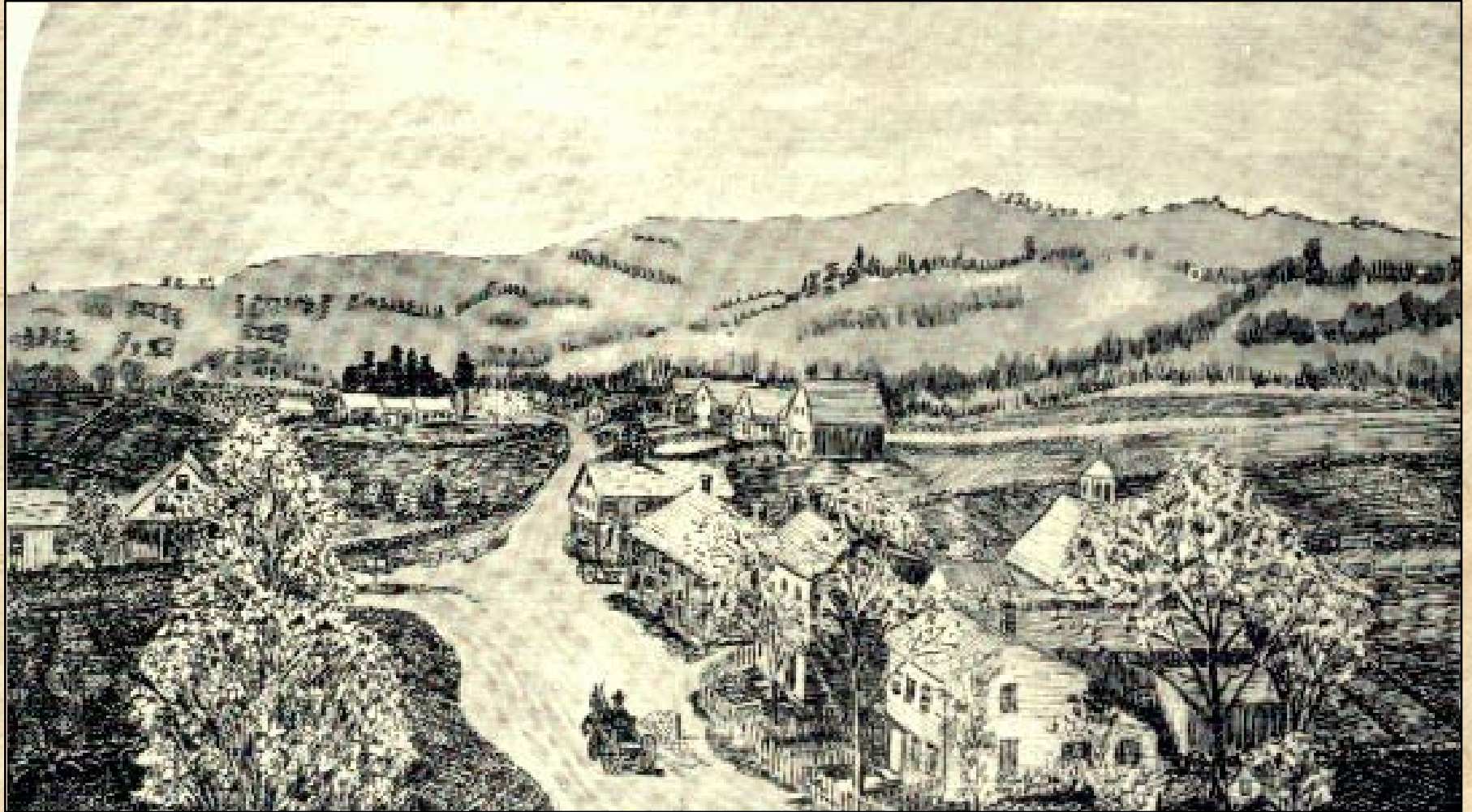


“Our Past and present coming together in celebration of our town’s people, places, history and future.”

Weare Heritage Commission



Weare Town Center



Rendition Painted by Oscar Straw

New Hampshire
state law
recognizes that
its towns and
cities are filled
with a rich blend
of . . .



. . . natural and
cultural
resources which
define their
special
character.





There is a necessity for identifying and protecting the cultural “cornerstones” of our town.



In 2005 the Weare Heritage Commission was placed on the ballot and approved by the voters.

What Is a Heritage Commission?

A Heritage
Commission
shall properly
inventory,
preserve,
protect and
promote all
resources . . .





. . . within the community that are valued for their historic, cultural, aesthetic, or community significance.



The Weare Heritage Commission strives to act as a nurturing influence for Weare's historical resources through education and outreach.



It works also with other town committees, boards, commissions and non-profit groups in an advisory capacity.

Why Do We Need a Heritage Commission?

Weare's
historical
buildings . . .





. . . stonewalls, cellar holes . . .



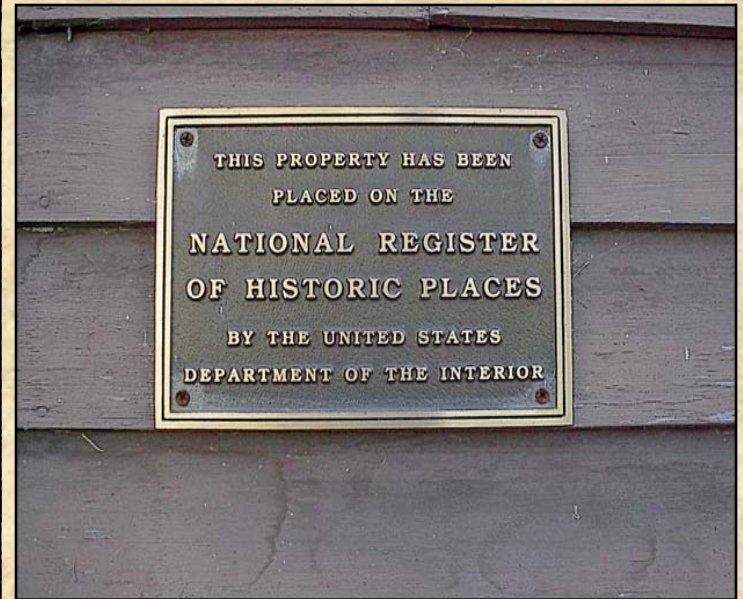
. . . and viewscales . . .



. . . are tangible evidence of our town's history and evolution.



Wedded with Weare's natural beauty and its engaged citizens . . .



. . . these components converge to reflect a town with a vibrant past and present . . .



. . . an entity deserving of respect and support.

What can The Weare Heritage Commission Do?

Raise funds to hire a
preservation
consultant to
inventory Weare's
historical resources.





This inventory will help us pinpoint preservation priorities (threatened structures or areas).



Apply for grants and other funding to refurbish . . .



. . . save and maintain these structures . . .



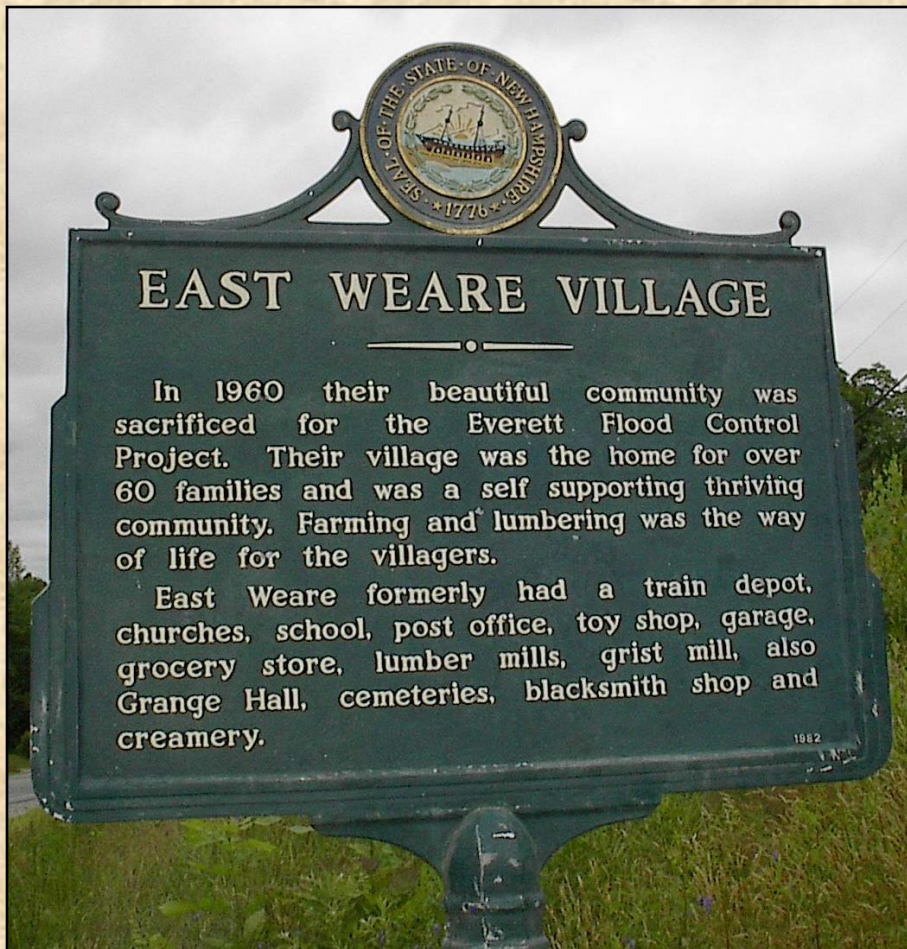
. . . or areas.

Act as a resource for townspeople who may be interested in learning more about tax credits, methods, and other support available for owners of historical properties.





Potentially increase tourism by cultivating and maintaining our history and natural beauty.



What Are Our Immediate Goals?

Procure funding for
a survey designed
to inventory our
historical sites.



Immediate Goals

Procure funding to begin restoration on the most threatened sites.



Immediate Goals

Redefine the use of sites so that they might serve and be enjoyed by the townspeople.

Immediate Goals

Become a clearinghouse of information for interested citizens.



Immediate Goals

Encourage and
inspire
enthusiasm,
pride and
respect for
this town, our
home . . .



Weare New Hampshire





Get Involved!

Celebrate Weare's History.

Contact Us . . .

Weare Heritage Commission

Chairperson
George Malette
(603) 529-5429
gmmalette@comcast.net

Vice Chair
Heleen Kurk

Secretary
Meg Malette

Ex-Officio
Donna Osborne

WHC Member
Pat Karpen



Weare Heritage Commission

Chairperson
George Malette
(603) 529-5429
gmmalette@comcast.net

Vice Chair
Heleen Kurk

Secretary
Meg Malette

Ex-Officio
Donna Osborne

WHC Member
Pat Karpen



Slide presentation
will start at the
beginning soon . . .

